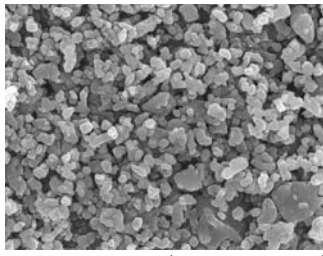


# High Purity Alumina

AHP series are High Purity Aluminas with purity of 99.99% or higher. AHP200 is a submicron grain product with excellent sintering properties. AHP300 is a further purified product suitable for optical materials. AHP300G is a spherical product with good flowability to crucible.

AHP300H is a granular product with higher loading to crucible. AHP300B is a pellet product with higher loading to crucible. AHP300B in combination with AHP300G/H can maximize sapphire output.



AHP200



AHP300G



AHP300H



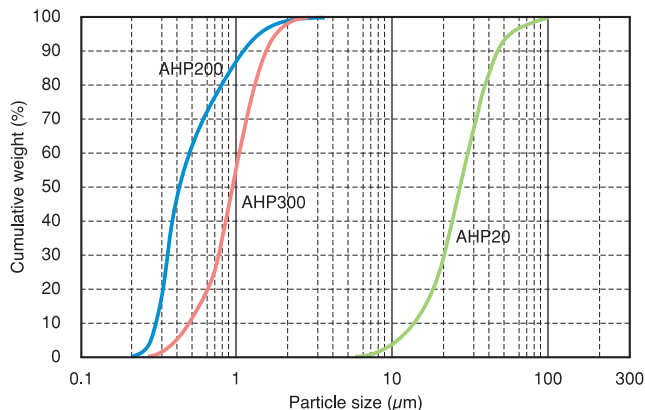
AHP300B

## Typical Properties

Grade	AHP200 powder	AHP300 powder	AHP200 powder	AHP300 powder	AHP300G granule	AHP300H granule	AHP300B pellet
Na (ppm)	20	10	20	10	10	10	10
Si (ppm)	8	8	8	8	8	8	8
Fe (ppm)	3	3	3	3	3	3	3
Ca (ppm)	1	1	1	1	1	1	1
Mg (ppm)	1	1	3	2	2	2	2
Al <sub>2</sub> O <sub>3</sub> (%)	99.99	99.99	99.99	99.99	99.99	99.99	99.99
Ave. Particle Size (μm)	30.0	30.0	0.4	1.0	2mm	2mm	φ 50mm*
α-Crystal Size (μm)	0.2~0.4	1.0~1.5	0.2~0.4	1.0~1.5	1.0~1.5	1.0~1.5	1.0~1.5
BET Specific Surface Area (m <sup>2</sup> /g)	4.5	2.0	6.0	3.0	1.7	0.3	—
Bulk Density (Loose) (g/cm <sup>3</sup> )	0.7	0.7	0.8	0.8	1.2	2.1~2.3	≥3.4**

\*Diameter \*\*Fired Density

## Particle Size Distribution



## Applications

- (1) Magnetic recording media
- (2) Single crystal (e.g., Sapphire)
- (3) Translucent ceramics
- (4) Fluorescent materials
- (5) Thermal spray materials
- (6) Engineering ceramics

## Packing

- Paper bag
- Plastic bag
- Pail
- Cardboard box